

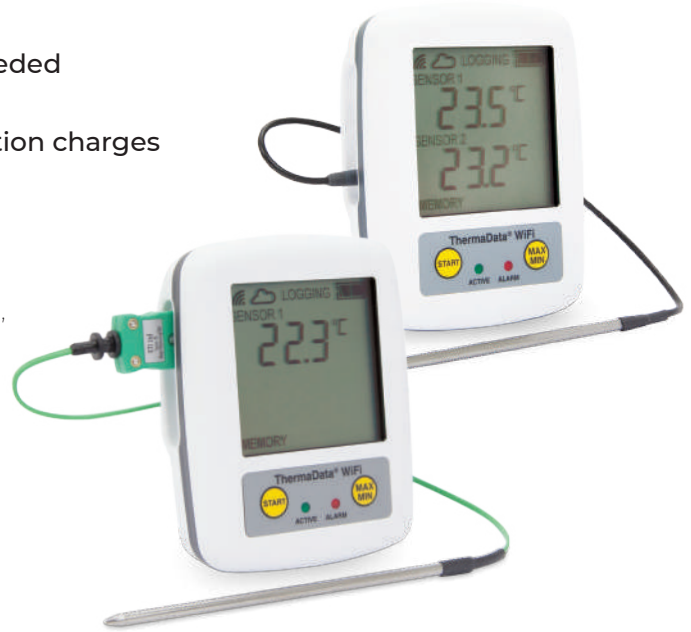
# THERMADATA® WIFI LOGGERS FOR TEMPERATURE

- Email alerts user when alarm limits are exceeded
- Access recorded data worldwide via internet
- FREE software with NO ongoing or subscription charges
- Programmable high/low alarms

The ThermaData WiFi loggers utilise the latest WiFi wireless technology. The loggers are a battery powered, cost-effective, temperature monitoring system that remotely records the temperature of appliances and buildings. Each logger transmits the recorded data to a WiFi router connected to the internet which can be accessed and viewed from a PC, laptop or tablet anywhere in the world.

The loggers have a range limited to the specification of the users WiFi router. Each logger has an intuitive LCD displaying; temperature, WiFi and internet connection status, max/min recorded temperatures, alarm status and battery life.

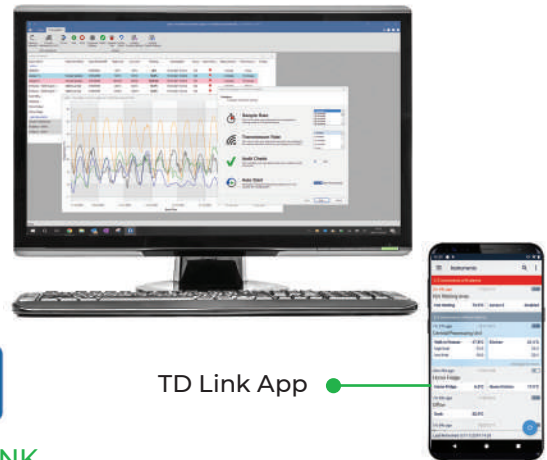
At programmable intervals, the loggers will record temperature from both sensors, recording up to a maximum of 18000 readings (9000 from each sensor). Each logger incorporates a red and green LED. The flashing green LED indicates that the logger is active/logging and the flashing red LED indicates that the customised preset alarms have been exceeded. Each logger communicates directly to the WiFi router at set intervals to push data through the internet into ThermaData Studio. The information is available to be analysed and exported into a report format. Each unit is supplied with a USB lead and FREE wall bracket. ThermaData Studio software is available to download FREE from our website and is licence free, with no ongoing or subscription charges.



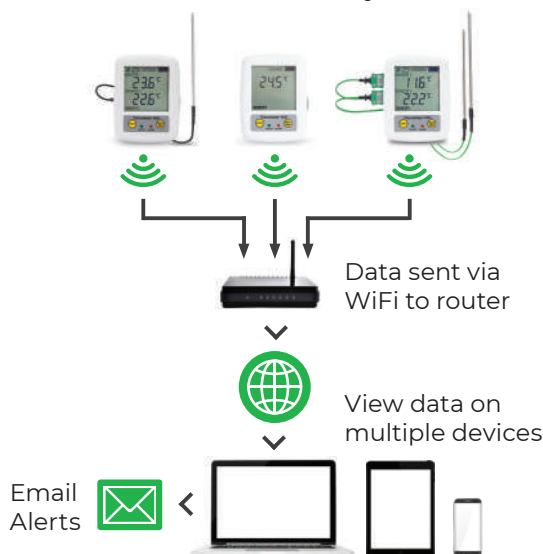
REMOTE MONITORING

## HOW DOES THE THERMADATA WIFI LOGGER WORK?

Using the unique ID of each logger, ThermaData Studio creates a secure connection between logger and software, which can be accessed and viewed anytime and anywhere with an internet connection. Each logger communicates directly to the WiFi router at set intervals to push data through the internet into ThermaData Studio. The information is available to be analysed and exported into a report format.



Simple setup & easy to use software makes the ThermaData WiFi loggers perfect for HACCP analysis



TD Link App

## TD LINK

By signing in to the TD Link app, you can view the status of all the ThermaData wireless thermometer units associated with ThermaData Studio, wherever the internet is available.

You can view the current readings, settings and reference information of all your thermometers. Warning indicators will appear if there is a problem with any instrument, or if any sensor reading has reached the alarm levels set in ThermaData Studio.

For each thermometer, you can opt to receive push notifications when an alarm condition has been detected.

TD Link is a view-only app, that cannot be used to alter instrument settings. Available on iOS and Android.

Please note: WiFi routers have a range of 100 metres depending on the make, model, capabilities and setup of the router. Environmental conditions may also affect the signal strength.

## THERMADATA® WIFI ONE/TWO CHANNEL THERMISTOR LOGGERS

The ThermaData WiFi thermistor loggers can be supplied with one internal sensor or a stainless steel general purpose probe (Ø3.3 x 100 mm) with a one metre PUR/PVC fixed lead. **Please Note:** Model TD1F is supplied with one external remote probe and an internal sensor. Model TD2F is supplied with two external remote probes.

Specification	TD	TD1F	TD2F
Range - internal	0 to 50 °C	0 to 50 °C	N/A
Range - external	N/A	-40 to 125 °C	-40 to 125 °C
Resolution	0.1 °C/°F		
Accuracy	±0.5 °C		
Memory	18000 readings	2 x 9000 readings	
Sample rate	6 seconds to 330 minutes		
Battery & life	2 x 1.5 volt AA - approximately 1 year		
Display	12 mm LCD/2 LED's		
Dimensions	29 x 72.5 x 96 mm		
Weight	165 grams model dependant		
<b>FREE traceable certificate of calibration included</b>			



Order code	Description
298-001	Model TD
298-011	Model TD1F*
298-111	Model TD2F*

\*Inclusive of thermistor probe(s)  
832-590 ABS wall bracket also included (see page 35)

## THERMADATA® WIFI TWO CHANNEL THERMOCOUPLE LOGGERS

The ThermaData WiFi thermocouple loggers are available in two sensor types, type K and type T thermocouple. **Please Note:** Each logger is supplied exclusive of probes, see below for a small selection of probes available or for alternative designs see page 81.

Specification	ThermaData WiFi - Thermocouple
Range - type K	-100 to 1372 °C
Range - type T	-100 to 400 °C
Resolution	0.1 °C/°F to 999.9 thereafter 1 °C/°F
Accuracy	±0.4 °C ±0.1 % of reading
Memory	2 x 9000 readings
Sample rate	6 seconds to 330 minutes
Battery & life	2 x 1.5 volt AA - approximately 1 year
Display	12 mm LCD/2 LED's
Dimensions	29 x 72.5 x 96 mm
Weight	165 grams
<b>FREE traceable certificate of calibration included</b>	



General purpose probes (133-158)



Order code	Description
298-121	Model TD2TC - type K
298-721	Model TD2TC - type T
830-800	Magnetic mount
830-880	Protective boot - black

Exclusive of thermocouple probes

		Order code
<b>GENERAL PURPOSE PROBE</b>  HIGH ACCURACY HIGH ACCURACY Ø3.3 x 100 mm	This stainless steel probe is suitable for a wide range of applications. Supplied with a one metre PTFE insulated lead and connector. <ul style="list-style-type: none"> <li>Response time less than 5 seconds</li> <li>Probe temperature range -75 to 250 °C</li> </ul>	133-158 (1000 mm) 133-220 (3000 mm) 133-222 (5000 mm)
<b>FOOD SIMULANT PROBE</b>  HIGH ACCURACY HIGH ACCURACY 9 x 100 x 100 mm	This polypropylene simulant probe is designed for use in refrigeration, food storage and chill cabinets. Supplied with a one metre PTFE insulated lead and connector. <ul style="list-style-type: none"> <li>Probe temperature range -20 to 100 °C</li> </ul>	133-350 (1000 mm) 133-352 (3000 mm) 133-354 (5000 mm)
<b>HEAVY DUTY PTFE WIRE PROBE</b>  HIGH ACCURACY HIGH ACCURACY Ø2.4 x 1000 or 2000 mm	This heavy duty, PTFE insulated wire probe is ideal for measuring the air temperature in fridges, freezers, ovens etc. <ul style="list-style-type: none"> <li>Response time less than 1 second</li> <li>Probe temperature range 75 to 250 °C</li> </ul>	133-372 (1000 mm) 133-373 (2000 mm)

Please note: for type T thermocouple probes, replace the third digit (3) of the order code with the number 7

# THERMADATA® PHARM WIFI LOGGERS

- External sensor(s) designed to simulate fridge contents temperature
- FREE software with NO ongoing or subscription charges
- Access recorded data worldwide via internet
- Programmable high/low alarms

The ThermaData Pharm WiFi loggers are a battery powered, cost-effective, temperature monitoring system that remotely records storage and transportation temperatures of perishable items such as food, vaccines and medication.

Each logger has an intuitive LCD displaying; temperature, WiFi connection status, max/min recorded temperatures, alarm status and battery life. Simple to set up, the logger once up and running will transmit recorded data to a WiFi router connected to the internet which can then be accessed and viewed from a PC, laptop or tablet anywhere in the world.

At programmable intervals, the loggers will record temperature from both sensors, recording up to a maximum of 18000 readings (9000 from each sensor). Each logger incorporates a red and green LED.

The flashing green LED indicates that the logger is active/logging and the flashing red LED indicates that the customised preset alarms have been exceeded. Each logger communicates directly to the WiFi router at set intervals to push data through the internet into ThermaData Studio. The information is available to be analysed and exported into a report format. Each unit is supplied with a USB lead and free wall bracket ThermaData Studio software is available to download FREE from our website and is licence free, no ongoing or subscription charges.

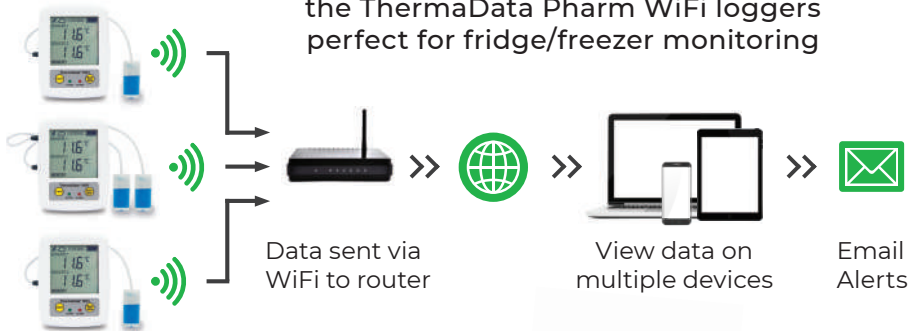
Each thermistor probe is encased in a sealed bottle and incorporates a two metre PUR/PVC fixed lead. To begin monitoring, simply unscrew and top up with Glycol solution (50 ml bottle supplied).

**Please Note:** Model TD1F Pharm is supplied with one external remote probe and an internal sensor. Model TD2F is supplied with two external remote probes. For more information contact our sales office.



REMOTE MONITORING

Simple setup & easy to use software makes the ThermaData Pharm WiFi loggers perfect for fridge/freezer monitoring



- TD Link available on iOS and Android for mobile phone push notifications

Magnetic mount (830-800) ●



Order code	Description
298-011-PHM	Model TD1F c/w Pharm probe
298-111-PHM	Model TD2F c/w Pharm probes
830-880	Protective silicone boot - black
832-590	Replacement ABS wall bracket
830-800	Magnetic mount
816-035	Replacement Glycol solution - 50 ml

**Inclusive of thermistor probe(s) & USB lead**

Specification	Model TD1F	Model TD2F
Range - internal	0 to 50 °C	N/A
Range - external	-40 to 70 °C	-40 to 70 °C
Resolution	0.1 °C/°F	
Accuracy	±0.5 °C	
Memory	2 x 9000 readings	
Sample rate	6 seconds to 330 minutes	
Battery & life	2 x 1.5 volt AA - approx. 1 year	
Display	12 mm LCD/2 LED's	
Dimensions	29 x 72.5 x 96 mm	
Weight	165 grams	

**FREE traceable certificate of calibration included**

Please note: WiFi routers have a range of 100 metres depending on the make, model, capabilities and setup of the router. Environmental conditions may also affect the signal strength.

# THERMADATA® WIFI LOGGER FOR HUMIDITY

- FREE software with NO ongoing or subscription charges
- Simultaneously displays humidity & temperature
- Access recorded data worldwide via internet
- Programmable high/low alarms

These ThermaData WiFi humidity loggers measure and record both temperature and relative humidity (%rh) over the range of 0 to 50 °C and 0 to 100 %rh. At programmable intervals, the loggers will record simultaneously both temperature and humidity, recording up to a maximum of 18000 readings (9000 humidity and 9000 temperature).

The logger incorporates a large LCD that displays temperature and humidity from the internal sensors. Each ThermaData WiFi humidity logger incorporates two LED's, a flashing green LED indicates that the logger is active/logging and a flashing red LED indicates that your customised preset alarms have been exceeded.

The humidity and temperature ThermaData WiFi loggers are suitable for a diverse range of applications which include HVAC climate monitoring, QA monitoring of storage areas etc.



## THERMADATA STUDIO SOFTWARE

Both powerful and sophisticated, yet user-friendly, the ThermaData Studio software enables temperature and humidity data to be organised and analysed to provide management information.

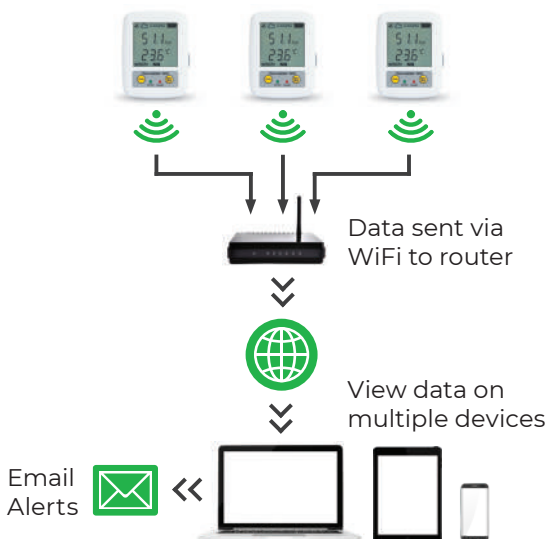
The ThermaData Studio software has the ability to display up to 32 traces on a graph, the trace colours are user selectable. All files can be viewed as thumbnail icons for easy identification.

The software allows the user to programme the logging sample/interval rate (6 seconds to 330 minutes), communication interval (sync) with PC, real-time clock, °C or °F and a manual start option. It is also possible to include a user ID for each logger.



Order code	Description
298-621	ThermaData WiFi HTD
830-880	Protective silicone boot - black
830-800	Magnetic mount
890-111	UKAS 3-point certificate available

## HOW DOES THE THERMADATA WIFI HTD LOGGER WORK?



- TD Link available on iOS and Android for mobile phone push notifications

Specification	Temperature	Humidity
Range	0 to 50 °C	0 to 100 %rh
Resolution	0.1 °C/°F	0.1 %rh
Accuracy	±0.5 °C (0 to 50 °C)	±2 %rh @ 25 °C (20 to 80 %rh) ±3 %rh @ 25 °C (10 to 90 %rh) ±4 %rh @ 25 °C (0 to 100 %rh)
Hysteresis	N/A	±1 %rh
Sensor type	Thermistor	Capacitance polymer
Memory	2 x 9000 readings	
Sample rate	6 seconds to 330 minutes	
Battery & life	2 x 1.5 volt AA - approx. 10 months @ 20 °C	
Display	12 mm LCD/2 LED's	
Dimensions	29 x 72.5 x 96 mm	
Weight	165 grams	

Optional UKAS Certificate of Calibration available