

# Laboratory INCUBATORS



**JSR**

[주] 제이에스리서치  
JS Research Inc.

# Laboratroy

## INCUBATOR

## SELECTION GUIDE

### JSGI-Series General Heated Incubator



- ▶ amb. +5 °C ~ 70 °C
- ▶ Constant Temperature
- ▶ Timer On / Off
- ▶ RS-232C or 485 [OPTION]
- ▶ Program Controller
- ▶ 5 PTN 80 SEG [OPTION]



MODEL	CAPACITY	TEMPERATURE	ACCURACY
JSGI-050T	48 L	amb. + 5 °C ~ 70 °C	± 0.2 °C
JSGI-100T	96 L		± 0.2 °C
JSGI-150T	150 L		± 0.2 °C
JSGI-250T	250 L		± 0.3 °C
JSGI-250DT	2 x 250 L		± 0.3 °C

### JSGI-Series Compact Incubator



- ▶ amb. +5 °C ~ 50 °C
- ▶ Constant Temperature
- ▶ Timer On / Off



MODEL	CAPACITY	TEMPERATURE	ACCURACY
JSGI-10T	9.3 L	amb. + 5 °C	± 0.2 °C
JSGI-30T	31.5 L	~ 50 °C	± 0.2 °C

### JSBI-C Series Cooled BOD Incubator



- ▶ +0 °C ~ 70 °C
- ▶ Constant Temperature
- ▶ Timer On / Off
- ▶ RS-232C or 485 [OPTION]



MODEL	CAPACITY	TEMPERATURE	ACCURACY
JSBI-050C	50 L	+ 0 °C ~ 70 °C	± 0.2 °C
JSBI-100C	100 L		
JSBI-150C	150 L		
JSBI-250C	250 L		
JSBI-420C	420 L		
JSBI-840C	840 L		

### JSBI-CP Series Programmable Cooled Incubator



- ▶ +0 °C ~ 70 °C
- ▶ Program Controller
- ▶ 5 PTN 80 SEG
- ▶ RS-232C or 485 [OPTION]



MODEL	CAPACITY	TEMPERATURE	ACCURACY
JSBI-150CP	150 L	+ 0 °C ~ 70 °C	± 0.2 °C
JSBI-250CP	250 L		
JSBI-420CP	420 L		

## JSBI-DCP Series Dual Chamber Cooled Incubator



- ▶ Dual Chamber
- ▶ +0 °C ~ 70 °C
- ▶ Constant Temperature or Program Controller  
5 PTN 80 SEG
- ▶ Timer On / Off
- ▶ RS-232C or 485 [OPTION]



MODEL	CAPACITY	TEMPERATURE	ACCURACY
JSBI-250DC	2 x 250 L	+ 0 °C ~ 70 °C	± 0.2 °C
JSBI-250DCP			

## JSMI-02 Series 2 Chamber Incubator



- ▶ Dual Chamber
- ▶ +0 °C ~ 70 °C
- ▶ Constant Temperature or Program Controller  
5 PTN 80 SEG
- ▶ Timer On / Off
- ▶ Photoperiodic Light Control
- ▶ RS-232C or 485 [OPTION]



MODEL	CAPACITY	TEMPERATURE	FEATURE
JSMI-02C	2 x 125 L	+ 0 °C ~ 70 °C	Constant
JSMI-02CP			Program
JSMI-02CPL			Light

## JSMI-04 Series Multi-Room Incubator



- ▶ Four Chamber
- ▶ +0 °C ~ 70 °C
- ▶ Constant Temperature or Program Controller  
5 PTN 80 SEG
- ▶ Timer On / Off
- ▶ Photoperiodic Light Control
- ▶ RS-232C or 485 [OPTION]



MODEL	CAPACITY	TEMPERATURE	FEATURE
JSMI-04T	4 x 125 L	0 °C ~ 70 °C	Heated
JSMI-04C			Cooled
JSMI-04CP			Program
JSMI-04CPL			Light
JSMI-05C(L)	5 x 44 L	+5 °C ~ 70 °C	Cooled
JSMI-08CP(L)	8 x 26 L	+5 °C ~ 70 °C	Cooled

## JSSC-Series Cold Lab Storage Chamber



- ▶ 4 °C Refrigerator
- ▶ On/Off Control
- ▶ RS-232C or 485 [OPTION]



MODEL	CAPACITY	TEMPERATURE	ACCURACY
JSSC-700C	686 L	+ 0 °C ~ 10 °C	± 2.0 °C
JSSC-1200C	1176 L		

## Controller Guide

	JSC-0D Basic Controller	JSC-1D Digital PID Controller	JSC-3D Programmable Controller	JSC-5D Programmable Controller
Type	Digital PID		16-bit Microprocessor	
Display	LED		2-Line Back light LCD	
Operation	Constant Temperature		Constant Temp. Mode Program Mode	
Accuracy	± 0.1 °C		± 0.1 °C	
Timer	Auto START/STOP		Auto STOP	
Timer Scale	Max. 99min 59sec / 99hr 59min / 99 day 23hr selectable		Max. 99min 59sec / 99hr 59min selectable	
Pattern Memory	n/a	n/a	1 Pattern	5 Patterns
Max. Segment			11 Segments	80 Segments
Max. Repeats			999 or unlimited Segment Skip	999 or unlimited Segment Skip Pattern Link
Light Control	On/Off control integrated with programming			
RS-232C or RS-485	n/a	Yes [OPTION]	Yes [OPTION]	Yes [OPTION]
PC Software	n/a	Yes [OPTION]	Yes [OPTION]	n/a
Calibration	Yes	Yes	Yes	Yes
Auto-tuning	Yes	Yes	Yes	Yes

JSC-0D



JSC-1D



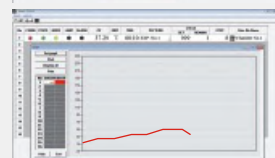
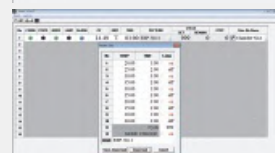
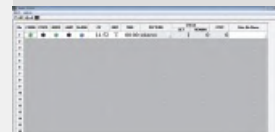
JSC-3D



JSC-5D



### ▶ PC Software [OPTION]



- ▶ RS-232C Serial Port Communication
- ▶ Turn On and Off control
- ▶ Temperature and Timer Setting
- ▶ Pattern Programming and uploading
- ▶ Current temperature Graph Rendering
- ▶ Temperature Data Logging
- ▶ Alarm Signal
- ▶ RS-232C 시리얼 포트 통신
- ▶ 작동, 정지 제어
- ▶ 온도설정, 타이머 설정 기능
- ▶ 패턴 프로그래밍 기능
- ▶ 작동 중 온도 그래프 표시 기능
- ▶ 온도 데이터 수집 및 저장 기능
- ▶ 알람 현황 표시

#### ASCII Data Collection

Date	Time	Temp	Step	Seg	Cycle
2014:01:08	09:00:00	37.00	00:05	03	001/999
2014:01:08	09:00:10	37.01	00:05	03	001/999
2014:01:08	09:00:20	37.01	00:05	03	001/999
2014:01:08	09:00:30	37.00	00:05	03	001/999

# Performance & Convenience

## Construction



- ▶ Durable epoxy powder coated metallic casing
- ▶ 내구성이 뛰어난 에폭시 분체 도장

## Chamber



- ▶ Corrosion resistant Stainless Steel 304 chamber with seamless round cornered edge allows easy cleaning and prevents leakage
- ▶ 내부식성이 뛰어난 Stainless Steel 304 재질의 챔버 코너는 이음새없이 라운드 처리 되어 있어 세척이 간편

## Inner Glass Door



- ▶ High density silicone packing with air-tight door lock
- ▶ Removable and height adjustable shelf by 25mm spacing
- ▶ 내부 유리 도어와 고밀도 실리콘 패킹, 밀착식 도어락
- ▶ 25mm 간격으로 높이 조절 가능한 선반

## Light Control



- ▶ Programmable Photoperiodic lighting control system
- ▶ 일광조절이 가능한 조도 ON/OFF 프로그램기능

# Safety



- ▶ **DUAL OVER TEMP. CUT-OFF**
  - 1) Digital system cut-off heater and AUDIO VISUAL ALARM in case +2°C above set temperature
  - 2) Analog system cut-off heater 10% above set temp.
- ▶ **MAX TEMP CUT-OFF** heater and AUDIO VISUAL ALARM when +1°C above maximum limit
- ▶ **GLASS DOOR SWITCH**
- ▶ **SENSOR DISCONNECTION ALARM**
- ▶ **OVER CURRENT CUT-OFF** : Electrical Leakage Breaker

### 이중과열방지장치

- 1) 설정 온도 +2 °C 초과 시 히터 차단 및 시청각 알람
- 2) 콘트롤러 오류로 지정 온도 10% 초과 시 히터차단

### 최고온도알람기능 : 작동한계 온도+1°C 초과시 히터 차단

### 도어스위치

### 센서단락알람

### 누전차단기 : 전기누설 시 주전원 차단

## Maintenance



- ▶ Easy to maintain refrigeration system with dust filter
- ▶ 편리한 유지보수 먼지 필터 장착

# Compact INCUBATOR

ECONOMIC  
for HACCP LAB.  
Gravity Convection



## Compact Incubator

JSGI-Series Compact Economic Incubator is suitable for personal, small food laboratory or HACCP Industry doing daily incubation of bacterial screening with Petri-Dish or Petri-Film.

### Specifications

<b>Heating</b>	Gravity Convection (JSGI-10T) Forced Convection (JSGI-30T)
<b>Temp. Range</b>	ambient + 5 °C ~ 50 °C
<b>Accuracy</b>	± 0.2 °C at 37.0°C (JSGI-10T)
<b>Uniformity</b>	± 0.5 °C at 37.0°C (JSGI-10T)
<b>Control</b>	Microprocessor PID Control Auto START / STOP Timer
<b>Sensor</b>	Class A Pt-100 Ω Sensor
<b>Safety</b>	Over-Temperature Cut-Off Over Current Cut-Off
<b>Material</b>	Body : Epoxy Powder Coated Steel Chamber : Stainless Steel 304 Inner Glass Door (JSGI-30T only) Including PVC Coated Wire Shelf
<b>Electric</b>	220 ± 10% VAC 50/60Hz 1-Phase

Plug config.



CEE 7/7 Schuko

or



BS 1363

### Control Accuracy

- ± 0.1 °C Digital PID Controller with automatic START/STOP timer max. 99min 59sec / 99hr 59min / 99 day 23hr
- Temperature calibration, auto-tuning function
- Class A Pt-100 Ω sensor
- 정밀한 PID 컨트롤러는 온도를 ± 0.1 °C 단위로 제어
- 예약 / 정지 타이머 내장 99분59초 / 99시간59분 / 99일23시간
- 온도보정, 오토튜닝 기능 내장
- Class A Pt-100 Ω 온도 센서



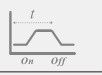
Heated amb.+5 °C ~ 50 °C



Constant Temperature  
Controller



Timer On / Off



## Performance

- ▶ Durable epoxy powder coated metallic casing
- ▶ Corrosion resistant Stainless Steel 304 chamber
- ▶ JSGI-10T : Mild gravity convection with durable silicone film heater
- ▶ JSGI-30T : Forced Convection with blower maintain better thermal uniformity
- ▶ Simple and durable design permits practical usage of bacteria screening such as HACCP laboratory

- ▶ 내구성이 뛰어난 에폭시 분체 도장 본체
- ▶ 내부식성이 뛰어난 Stainless Steel 304 재질의 챔버
- ▶ JSGI-10T : 판형태의 실리콘 히터로 챔버의 바닥 전체를 외부로부터 가열하는 자연대류방식
- ▶ JSGI-30T : 부드러운 공기 순환식 설계로 균일한 온도 분포
- ▶ 구조가 간단하여 내구성이 뛰어나 소규모 실험실이나 식품 분야의 HACCP 관리 실험실의 미생물 스크린 용도에 적합

## Convenience

- ▶ Outer door with self adhesive magnetic packing
- ▶ Inner glass door with high density silicone packing and air-tight door lock (JSGI-30T only)
- ▶ Stainless Steel 304 Chamber with seamless round cornered edge allows easy cleaning and prevents contamination
- ▶ Two tier removable PVC coated wire shelf
- ▶ 기밀성이 뛰어난 자석 접착방식의 외부 도어 패킹
- ▶ 내부 유리 도어와 고밀도 실리콘 패킹, 밀착식 도어락은 기밀성이 뛰어남 (JSGI-030T)
- ▶ 챔버의 코너는 이음새 없이 라운드 처리 되어 있어 세척이 간편하고 오염 방지
- ▶ 2단 PVC 코팅 선반

## Safety

- ▶ DUAL OVER TEMP. CUT-OFF
- ▶ MAX TEMP CUT-OFF
- ▶ AUDIBLE VISUAL ALARMS
- ▶ SENSOR DISCONNECTION ALARM
- ▶ OVER CURRENT CUT-OFF FUSE

## Accessories

Art No.	Descriptions
	<b>PVC Coated Wire Shelf</b>
PHS-C01	for JSGI-10T W205 x D200 mm
PHS-C02	for JSGI-30T W295 x D290 mm

## Ordering Information

		JSGI-10T	JSGI-30T
Heating		Gravity Convection	Forced Convection
Chamber Volume (Capacity)		9.3 L	31.5 L
Dimensions	Inner	210 x 210 x 210	300 x 300 x 350
W x D x H mm	Outer	315 x 370 x 435	425 x 460 x 590
	Inner Glass Door	no	yes
Temperature	Range	ambient+5 °C to 50 °C	
	Accuracy at 37.0°C	± 0.2 °C	± 0.2 °C
	Uniformity at 37.0°C	± 0.5 °C	± 0.5 °C
Number of shelves		2	2
Heater Capacity		60 W	100 W
Power Rating		0.3 Amp	0.5Amp
Power Plug		CEE 7/7 Schuko	