

Filtering Storage Refrigerator

**Strong deodorization function to remove hazardous gas from refrigerator and uniform temperature.
(Refrigeration temperature 0-15°C)**



FSR-650G

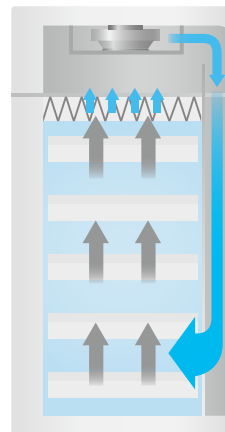
with Drawer Shelves 4ea, Spill Tray 1ea (standard)

Completed verification for hazardous gas removal capability

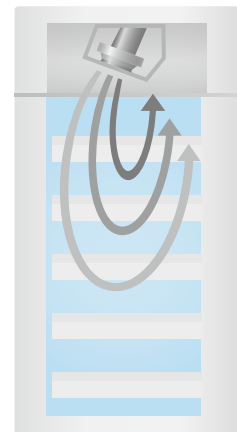
Proven ability to remove hazardous gases (SPS-KACA002-132)

Application of complex carbon filter (VOC, acid, base)

By circulating the air from the bottom of the storage to the filter at the top, hazardous gas removal and uniform temperature are provided.



Lab Companion Products



Existing commercial products

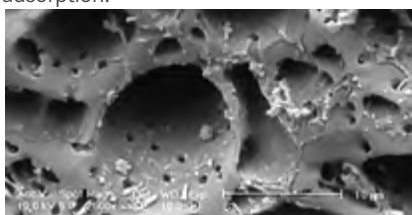
- > **Optimized air flow**
Excellent temperature uniformity and effective removal of hazardous gas through uniform air circulation throughout the cabinet.
- > **Brightness control LED lamp**
Easy to observe the inside with LED lamp, and possible to adjust the brightness to 5 levels.
- > **Filter check notification function**
Filter maintenance notification function of 1-24 month cycle makes it easy to manage the filter according to the usage environment.
- > **Easy to use as a drawer-type shelf**
Drawer-type shelf for convenient handling of inner samples installed as standard.
- > **Structure convenient for moving and installation**
Structure allows it to be moved and fixed and it can be also be safely installed horizontally.
- > **JEIO TECH exclusive controller**
Easy to use with touch, and displays useful information in real time such as VOC, temperature, humidity, filter check notifications, etc.
- > **Filter configuration customizable for application**
Various custom filter configurations supported depending on the chemical nature of the reagents to be stored.



Accessories

Lab Companion's Filter Series

- The Lab Companion's carbon filter is an excellent amorphous adsorbent with a high surface area, has fine pores and is manufactured through a multi-level impregnation process.
- Made of 100% impregnated filter, it is more than twice as efficient as general filters.
- Has the efficiency of an excellent composite filter as it simultaneously performs physical adsorption and chemical adsorption.



- Electron microscopic photographs of Lab Companion's carbon filter confirms development of numerous pores such as
Macropores (diameter of more than 500Å),
Mesopores (diameter of 20-500Å), and
Micropores. (diameter of 20Å or less)

Filter	Description	Cat. No.
Complex Carbon	Filters a wide range of chemicals, including acid, ammonia, and aldehyde.	AAAB6354
Acid	Filters acid gases such as HCl, HF, H ₂ S and CH ₃ COOH	AAAB6356
Formaldehyde	Filters formaldehyde, Acete aldehyde, etc.	AAAB6358
Ammonia / Amines	Filters basic gases such as NH ₃ , (CH ₃) ₃ N etc.	AAAB6359
HEPA	Filters 99.99% of toxic dust and other 0.3µ m particles	AAAB1545

- ※ The appropriate filter is selected according to the chemical used.
- ※ Built-in pre-filter primarily filters particles to extend the life of the other filters.
- ※ Above filter should be ordered two when you apply the FSR-1400G.

Additional fitting of drawer-type shelves

Description	Cat. No.
Drawer shelf (slide) set	AAAF1511

Specification

Model	FSR-650G	FSR-1400G
Temperature range (°C / °F)	0 ~ 15 / 32 ~ 59	0 ~ 15 / 32 ~ 59
Volume	Capacity (1 L bottle *ea)	100
	Internal volume (L / cu ft)	660 / 23.3
Dimensions	External (W x D x H, mm / inch)	770 x 850 x 1955 / 30.3 x 33.5 x 77
	Internal (W x D x H, mm / inch)	650 x 640 x 1450 / 25.6 x 25.2 x 57.1
	Drawer (W x D x H, mm / inch)	600 x 595 x 100 / 23.6 x 23.4 x 3.9
	Spill tray (W x D x H, mm / inch)	602 x 550 x 35 / 23.7 x 21.7 x 1.4, 1ea
Quantity of drawer (standard/max.)	4 / 8	8 / 16
Weight (kg / lbs)	320 / 705.5	640 / 1411
Electrical requirements (230V, 50/60Hz, A)	3	4
Cat. No.	AAHF13112K	AAHF13122K
Electrical requirements (120V, 60Hz, A)	3.7	7.3
Cat. No.	AAHF13113U	AAHF13123U