

Shaker

Program type

Program operation and maximum sample loading

▣ Structural Functional Features

- Standard 350rpm, Maximum 500rpm. (option)
- Application of DD motor & triple cam system stable shaking ability. (registration KR 10-1678160)
- Provides the widest platform size model.
- Up to 102 pieces of 250ml flasks can be mounted at once. (when using dual platform.)
- Dual platform mountable. (SKC-7000) (only flasks less than 250ml can be mounted on the bottom part)
- Provided Maximum 50.8mm shaking radius model.
- Convenient platform detachment system.
- Stable shaking with low center of gravity structure.
- Corrosion-resistant outer surface with powder coating and PP material.
- Structure prevents the sample from flowing into the inside.
- Model awarded Good Design certification.
- Applied a direct drive motor that has outstanding durability, a 5-year warranty for the motor.

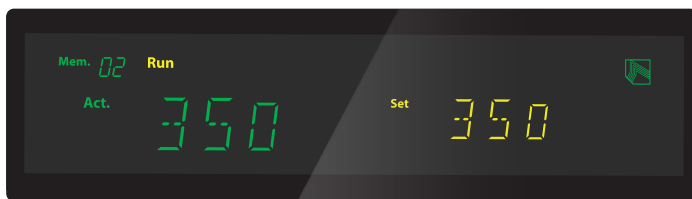


SKC-6000 Series

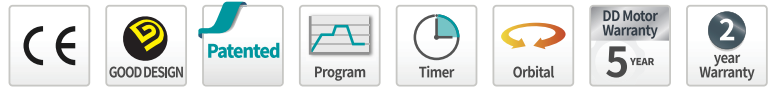
with Universal Platform, Flask Clamp, Test Tube Rack (option)

▣ Use Convenience Features

- Accurate shaking with PID feedback control.
- Provides Quick, Timer, and Program modes.
- Wait On/Off timer. (up to 99 hours 59 minutes)
- More reliable shaking simulation by clockwise / counterclockwise rotation.
- Stable control system even at low-speed agitation.
- Soft start and stop shaking function.
- Easy to use with fast acceleration/deceleration function.
- Possible to stop the equipment at the same position.
- Automatic rpm adjustment in case of instability.
- Equipment stoppage and alarm in case of abnormal shock.



- Displays sets rpm and actual rpm simultaneously.
- Provides all information on equipment operation.
- Convenient operation with shaking start/stop button.
- Convenient operation by changing rpm with control knob.
- Clear display. (clear VFD)

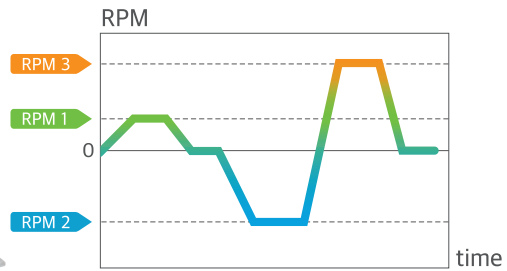


Outstanding Safety

- Alarm occurs when the current rpm differs from the set rpm.
- Over-current protection.

Differentiated Program Operation

- 20 patterns can be saved.
- 20 segments can be set per pattern.
- Time, rpm, and orbital direction can be set for each segment.
- Includes up to 99 repeat operations.



SKC-7000 Series

with Universal Platform, Flask Clamp (option)

Specification

Model	SKC-6075	SKC-6100	SKC-6200	SKC-7075	SKC-7100	SKC-7200
Shaking system						
Motion type	Orbital	Orbital	Orbital	Orbital	Orbital	Orbital
Speed range (rpm) ¹⁾	30 to 500	30 to 500	30 to 500	30 to 500	30 to 500	30 to 500
Max. speed per permissible load ²⁾	350rpm (max. 13kg) 310rpm (max. 28kg)	340rpm (max. 13kg) 260rpm (max. 28kg)	250rpm (max. 13kg) 200rpm (max. 28kg)	350rpm (max. 13kg) 310rpm (max. 28kg)	340rpm (max. 13kg) 260rpm (max. 28kg)	250rpm (max. 13kg) 200rpm (max. 28kg)
Amplitude size (mm / inch, dia)	19 / 0.75	25 / 1	50 / 2	19 / 0.75	25 / 1	50 / 2
Speed stability ³⁾ (rpm, %)	±1	±1	±1	±1	±1	±1
Timer (wait on/off)	99hr 59min	99hr 59min	99hr 59min	99hr 59min	99hr 59min	99hr 59min
Dimension						
Platform (Small, W x D, mm / inch)	580 x 520 / 22.8 x 20.5			755 x 520 / 29.7 x 20.5		
Platform (Large, W x D, mm / inch)	660 x 520 / 26 x 20.5			885 x 520 / 34.8 x 20.5		
Exterior (W x D x H, mm / inch)	582.8 x 618 x 122.2 / 22.9 x 24.3 x 4.8			754.8 x 662 x 122.2 / 29.7 x 26.1 x 4.8		
Net weight (kg / lbs)	65 / 143.3	65 / 143.3	65 / 143.3	75 / 165.4	75 / 165.4	75 / 165.4
Electric requirements (230V, 50/60Hz, A)						
Cat. No.	AAH30105K	AAH30115K	AAH30125K	AAH30205K	AAH30215K	AAH30225K
Electric requirements (120V, 60Hz, A)						
Cat. No.	AAH30106U	AAH30116U	AAH30126U	AAH30206U	AAH30216U	AAH30226U

1) 350 to 500rpm applies when separately purchased options are mounted.

2) The maximum controllable rpm by weight in Orbital Shaking mode. Maximum rpm that can be controlled according to increase in Orbital Shaking mode

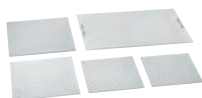
3) Actual rpm allowable error for set rpm (1rpm if setting is less than 100rpm, ±1% if setting is higher than 100rpm)

Accessories Page 124

Universal Platform, Spring Wire Rack, Rubber Mat, Universal Attachment, Lab Sticker, Flask Clamp, Funnel Clamp, Test Tube Rack, Microplate Holder

Accessories for Shaker

Universal Platform



Universal Platform

Basic accessories required to use separated funnels, erlenmeyer flask, test tube, etc.



Dual Universal Platform

Maximum sample loading possible with two-stage structure. (SKC-7000 series model exclusively)

Accessories for Universal Platform



Flask Clamp (STS / Plastic)

Erlenmeyer flask mounting (50ml – 6L)
High-strength spring maintains excellent clamping.



Starter Kit

Consisting of plastic clamps that are commonly used on Universal Platforms. 50ml, 100ml, 250ml, 500ml, 1L, 2L.



Funnel Clamp

Separated funnel mounting (250ml - 2L)
Easy detachment and stable clamping.



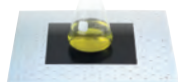
Test Tube Rack

Test tube mounting (Ø8 mm - Ø35 mm)
Easily adjustable angle.



Microplate Holder

Various configurations for microplate
Single, Tower, Flat A (Large), Flat B (Small)



Lab Sticker

Excellent adhesion at 200mm x 200mm size,
applied to petri dishes, culture bottles, etc.
Temp. Range (°C): 15-60 Max. Speed (rpm): 250

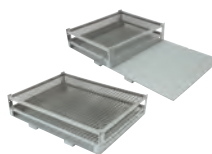
LC Connected



LC GreenBox

Real-time monitoring of device operation via mobile app.
Up to 4 devices can be connected.

Set Accessories



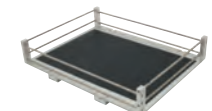
Spring Wire Rack, Half Spring Wire Rack

Available to load various sample container shapes.
For SKC-7000, half type can be used that providing both a universal platform and spring wire rack.



Dedicated Platform

Accessories (250 ml, 500 ml) installed on platform with maximum quantity of flask clamps.



Rubber Mat

Convenient for use with culture bottles and petri dishes with rubber plate to prevent slipping on the floor.



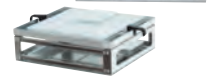
Universal Attachment

Floor rubber plate and adjustable clamping rod make it a convenient structure for a wide range of applications.



Microplate Tray (Dual Stacking Tray)

Dual stacking structure for microplate allows for excellent space utilization.



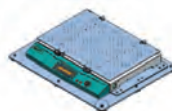
Microplate Tray (Large Tray)

The tray for microplates with anti-slip rubber plate on the bottom. (OS-2000, CMS-350)



Stage Rack

The rack maximizes space efficiency by stacking up to four shakers. (OS-2000/4000/7000)



Weight Increaser

Accessories allowing for use of SKC series shaker up to 500rpm.

Starter Kit

Description	Composition of Clamp	Cat. No.
Starter Kit I	50 ml (2), 100 ml (2), 250 ml (4), 500 ml (4), 1L (2), 2L (2)	AAA30581
Starter Kit II	50 ml (3), 100 ml (3), 250 ml (6), 500 ml (6)	AAA30582

Description	OS-2000	OS-3000	OS-4000	OS-7000 Series	SKC-6000 Series	SKC-7000 Series	CMS-350
Spring Wire Rack (Half)	-	-	-	-	-	AAA30525 ¹⁾ AAA30526 ²⁾	-
Dedicated Platforms (250 mL)	-	AAA23611-V1	AAA23621-V1	AAA23634	-	-	-
Dedicated Platforms (500 mL)	-	AAA23613-V1	AAA23622-V1	AAA23635	-	-	-
Rubber Mat	AAA3A531-V1	AAA23531-V1	AAA23532-V1	AAA23534	AAA30531 ¹⁾ AAA30532 ²⁾	AAA30533 ¹⁾ AAA30534 ²⁾	AAA38501
Universal Attachment	AAA3A511-V1	AAA23511-V1	AAA23512-V1	AAA23505	AAA30511 ¹⁾ AAA30512 ²⁾	AAA30513 ¹⁾ AAA30514 ²⁾	AAA3B521
Lab Sticker	AAA30551	AAA30551	AAA30551	AAA30551	AAA30551	AAA30551	AAA30551
Microplate Tray	Dual Stacking	AAA3A541	-	-	-	-	AAA3B531
	Large Tray	AAA3A542	-	-	-	-	AAA3B532
Stage Rack	4 Stages	-	AAA31541-V1	AAA31542-V1	AAA31702-V1	-	-
	3 Stages	-	-	-	AAA31703-V1	-	-
Weight Increaser	-	-	-	-	AAA30562	AAA30562	AAA30561

1) Small Size
2) Large Size

Description	Model	OS-2000	OS-3000	OS-4000	OS-7000 Series	SKC-6000 Series		SKC-7000 series		CMS-350	
	Platform Size (mm / inch)	320 x 260 / 13.8 x 10.2	350 x 350 / 13.8 x 13.8	450 x 450 / 17.7 x 17.7	755 x 520 / 29.7 x 20.5	580 x 520 / 22.8 x 20.5 (Small)	660 x 520 / 25 x 20.5 (Large)	755 x 520 / 29.7 x 20.5 (Small)	885 x 520 / 34.8 x 20.5 (Large)	276 x 276 / 10.9 x 10.9	
Universal Platform	Cat. No.	AAA3A501-V2	AAA23501-V3	AAA23502-V3	AAA23503-V3	AAA30501	AAA30503	AAA30502¹⁾ AAA30541²⁾	AAA30504¹⁾ AAA30542²⁾	AAA3B501	
Flask Clamp for Erlenmeyer Flask (Stainless steel)⁴⁾	50 mL	AAA23550	20	36	49	88	84	96	108 (216) ³⁾	126 (252) ³⁾	16
	100 mL	AAA23551	16	28	39	68	54	66	72 (144) ³⁾	84 (168) ³⁾	9
	250 mL	AAA23552	8	14	24	39	33	39	42 (84) ³⁾	51 (102) ³⁾	9
	300 mL	AAA23556	8	14	24	39	28	32	36	40	9
	500 mL	AAA23553	6	10	16	28	20	24	27	30	5
	1 L	AAA23554	3	6	9	18	14	16	18	20	4
	2 L	AAA23555	-	4	6	11	8	11	12	13	1
	2.8 L	AAA23557	-	3	5	8	6	7	9	11	-
	4 L	AAA23558	-	1	4	6	4	6	8	9	-
6 L	AAA23559	-	1	3	5	3	4	6	7	-	
Flask Clamp for Erlenmeyer Flask (Plastic)⁵⁾	50 mL	AAA30570	20	36	49	88	56	64	72	80	16
	100~125 mL	AAA30571	12	19	29	48	42	48	54	60	9
	200 mL	AAA30572	8	13	21	35	25	39	30	32	9
	250 mL	AAA30573	8	13	19	35	25	30	30	32	9
	300 mL	AAA30574	6	12	19	35	25	30	30	32	9
	500 mL ⁶⁾	AAA30575	6	9	12	24	20	20	24	28	5
	1 L ⁶⁾	AAA30576	3	5	9	12	10	12	12	15	4
2 L ⁶⁾	AAA30577	-	4	5	8	6	6	6	9	1	
Funnel Clamp	250 mL	AAA23562	4	4	6	15	14	16	18	20	3
	500 mL	AAA23563	3	3	4	10	9	10	11	14	2
	1 L	AAA23564	3	3	3	7	7	8	9	12	2
	2 L	AAA23565	-	2	2	5	5	6	7	8	-
Test Tube Rack⁴⁾	Ø8 mm (86ea)	AAA23581	2	2	4	7	8	9	9	12	2
	Ø10 mm (86ea)	AAA23582	2	2	4	7	8	9	9	12	2
	Ø12 mm (58ea)	AAA23583	2	2	4	7	8	9	9	12	2
	Ø14 mm (58ea)	AAA23584	2	2	4	7	8	9	9	12	2
	Ø17 mm (32ea)	AAA23585	2	2	4	7	8	9	9	12	2
	Ø25 mm (19ea)	AAA23586	2	2	4	7	8	9	9	12	2
	Ø35 mm (10ea)	AAA23594	2	2	4	7	8	9	9	12	2
Microplate Holder⁴⁾	Single	AAA23654	6	8	15	25	20	23	25	28	6
	Tower	AAA23651	4	6	10	21	16	19	22	25	6
	Flat A (Large)	AAA23652	-	-	2	4	3	4	4	5	-
	Flat B (Small)	AAA23653	1	2	3	6	4	5	6	7	-

1) Single platform installed in SKC-7000

2) Dual platform installed in SKC-7000, only flasks less than 250ml can be installed on the lower platform. (Height of lower platform is about 175mm)

3) The numbers in parentheses indicate the maximum number of 250ml flasks that can be installed when Dual Platform is mounted.

4) Maximum quantity that can be mounted on each platform (For test tube rack, it is the maximum quantity when the rack is not to be tilted)

5) In the case of plastic flask clamps mounting, deformation may occur at temperatures over 40°C. Stainless steel flask clamps are recommended when using in a high temperature environment.

6) Possible to use under 300rpm

Spring Wire Rack	OS-2000	OS-3000	OS-4000	OS-7000 Series	SKC-6000 Series		SKC-7000 Series		CMS-350	
					Small	Large	Small	Large		
Spring Wire Rack (Cat. No.)	AAA3A521	AAA31521-V1	AAA31522-V1	AAA23514	AAA30521	AAA30522	AAA30523	AAA30524	AAA3B511	
Quantity of Erlenmeyer Flask	50 mL	15	16	25	45	30	35	45	50	15
	100 mL	9	9	16	28	20	24	28	32	9
	250 mL	4	4	9	18	12	15	18	21	4
	300 mL	4	4	9	18	12	15	18	21	4
	500 mL	4	4	5	15	9	12	15	18	4
	1 L	2	2	4	10	6	8	10	12	2
	2 L	-	1	2	6	4	5	6	7	-
2.8 L	-	1	2	4	3	3	4	5	-	

LC GreenBox

Description	OS-2000	OS-3000	OS-4000	OS-7000 Series
LC GreenBox	AAHQ1011K	AAHQ1011K	AAHQ1011K	AAHQ1011K