

# RT-1 PLUS + THERMOCELL PACKAGE



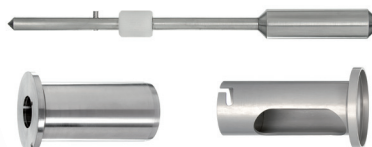
## FEATURES AND BENEFITS

- Temperature range from Room T°C to +300°C.
- Economic electric oven.
- Compatible with bayonet coupling device.
- Compatible with norms ASTM D4402 and D3236.

## WHAT'S INCLUDED WITH THERMOCELL PACKAGE ?

(Ref. N130150)

- 1 RT-1 PLUS oven (Ref. N130130).
- 1 Choice of one MK-SV spindle (p 79).
- 1 Cup MB-SV13R (Ref. 116213).
- 1 Holder H-SV13RD (Ref. 116313) for disposable cup MB-SV13RD.
- 5 Disposable cups MB-SV13RD (Ref. 116413 for 100pcs).
- 1 Centring tool ST-R (Ref. 114436).



## AVAILABLE TEMPERATURE DEVICES

Compatible with bayonet coupling device

Designation	Reference	Temperature range	Type	Compatible measuring system	Dimensions (pxlxh) in mm	Weight
RT1 PLUS + PROGRAMMER	N130130*	Room T°C to +300°C	Electrical	MS SV, MS DIN, MS ULV.	610x340x650	15kg
RT1 PLUS	N130110	Room T°C to +300°C	Electrical			

\* Allow temperature setting by measuring head or RheoTex software.

Tel : +33 (0)4 78 08 54 06  
 Fax : +33 (0)4 78 08 69 44  
 contact@lamyrheology.com

11 A, rue des Aulnes  
 69410 Champagne au Mont d'Or  
 France



www.lamyrheology.com