

## QucikStart Guide HumiPressureDisk Software

### Version 1.2.0.2

HumiPressureDisk software is used to connect to pressure, temperature and humidity loggers. Compatible models are:



PressureDisk



PressureDisk 05



PressureDisk V



RHTemp 80/125 L/XL



Pirani Vacuum Logger



Compatible connection bay is:



DiskInterface HS

### Download and Installation

Start the browser and open following link: [www.tecnosoft.eu/](http://www.tecnosoft.eu/)

Click on **Download Software** and scroll till you find HumiPressureDisk.



## Software & Apps

Products catalog // Software & Apps

Software e Apps for Tecno**soft** monitoring solutions are dedicated to different applications so that each one answers to the various needs required by the different fields. From transport monitoring apps to processes and instruments validation software, each interfaces with several devices and connection bays to manage data, analyze them and print detailed reports.

Scroll till the *Download* section and download the **Complete software**.

**NOTE:** It will be downloaded a .zip archive. You cannot start installation within a compressed archive. Create a folder on your hard drive, maybe on the desktop, and copy-paste all items in the .zip archive in the new folder. Start installation from the new folder.

### PressureDisk, RHTemp, Pirani management software with starting and setting mission's parameters

PressureDisk, RHTemp, Pirani Vacuum Logger management software, supports DiskInterface HS. Downloadable from Tecno**soft** website and included with the interfaces.

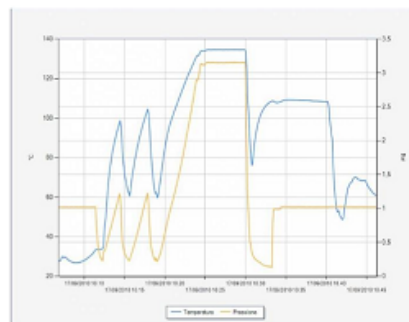
It has basic functions such as:

- loggers starting, setting mission's parameters (acquisition step etc.)
- loggers data downloading
- graph display of the recorded acquisitions
- export data to excel file

[REQUEST INFORMATION](#)

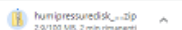
[PRODUCT SHEET](#)

Share on [f](#) [in](#) [t](#) [e](#)



### Download

	DiskInterface HS, DiskInterface HS Mini - USB drivers Windows XP / Vista / 7
	DiskInterface HS, DiskInterface HS Mini - USB drivers Windows 8 / 10
	HumiPressureDisk 1.1.2.0 - Complete software (USB drivers included)
	DiskInterface (old model) - USB driver Windows XP / Vista / 7 / 8 / 10



Double click on setup.exe to start installation (from the new folder you have just created).

Nome	Tipo	Dimensione compr...	Protetto d...	Dimensione	Proporzione
buttons	Cartella di file				
css	Cartella di file				
Drivers	Cartella di file				
EN	Cartella di file				
IT	Cartella di file				
Program	Cartella di file				
US	Cartella di file				
Utilities	Cartella di file				
autorun.inf	Informazioni di installazio...	1 KB	No	1 KB	30%
autorun.tag	File TAG	1 KB	No	1 KB	0%
background.png	Immagine PNG	1.222 KB	No	4.602 KB	74%
PressureDisk.ico	Icona	46 KB	No	145 KB	69%
setup.exe	Applicazione	362 KB	No	932 KB	62%
start.html	Chrome HTML Document	2 KB	No	5 KB	74%
tecno <b>soft</b> .png	Immagine PNG	5 KB	No	5 KB	4%
Thumbs.db	Data Base File	10 KB	No	12 KB	21%

## Registration

The software requires a registration. The registration code is connected to the PC: if you already have a code for this type it in the proper field. Otherwise, register your copy of the software by filing the Registration form. You will receive an email with the code: copy and paste it in the proper field to start the software.

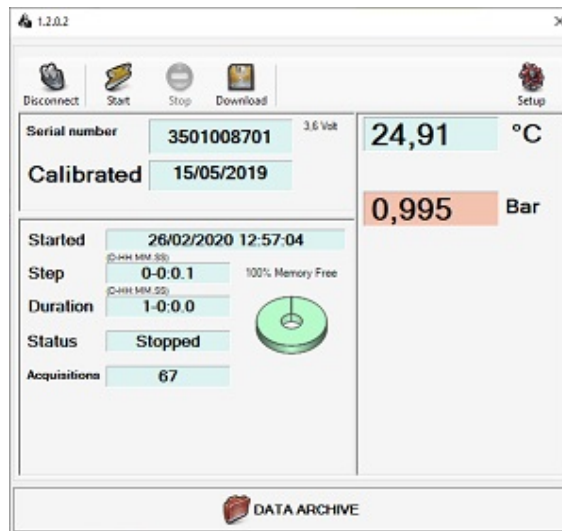
## Main Window

Main window has action buttons on top, main part in the centre and Archive button on the bottom.



## Data logger connection

Place the logger on the interface and click *Connect*: connection will be established.



Following information are shown:

**Serial number:** data logger serial number

**Calibrated:** data logger calibration date

Battery voltage **3,2 Volt**

**Started:** starting date&time of last mission

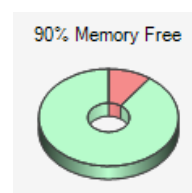
**Step:** acquisition step set last time

**Duration:** running time of last mission recorded

**Status:** data logger status (Stopped; Started)

**Acquisitions:** number of acquisitions

Free memory

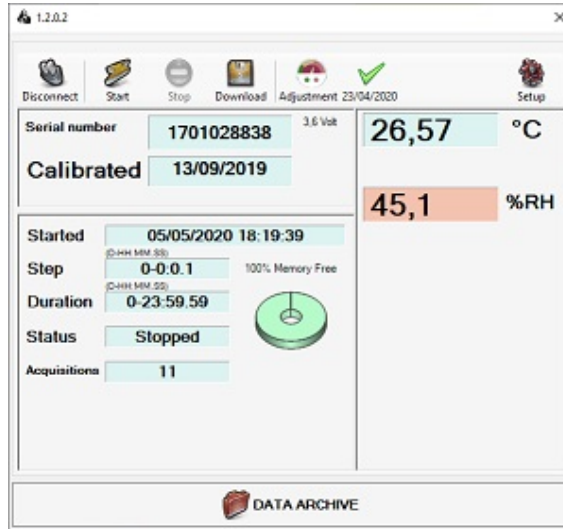


Real time reading of the values



### Data logger connection - RHTemp

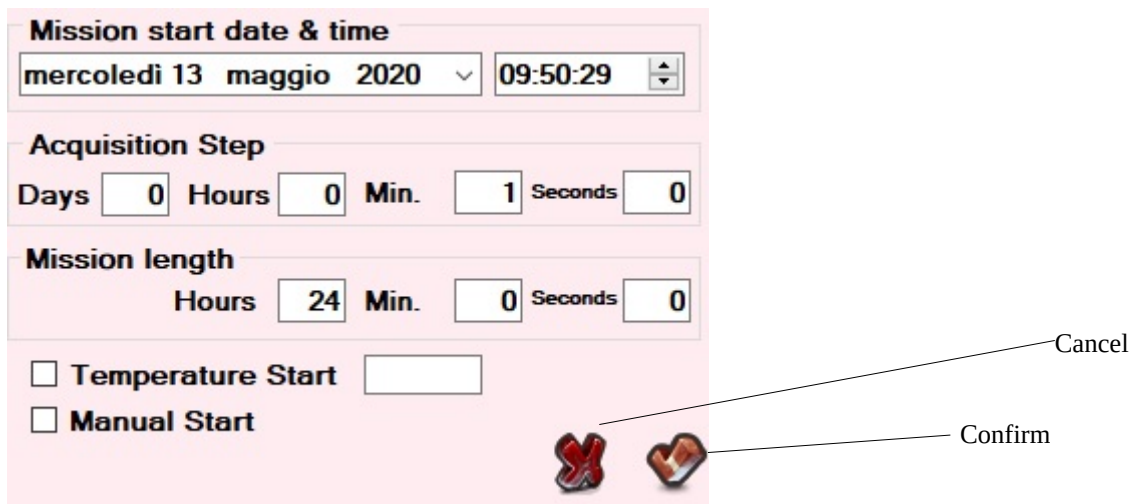
When you place a RHTemp logger on the interface and click *Connect* a couple of icons more are available.



The *Adjustment* button is used to insert corrections for the logger. The icon on its right is used to toggle between correction enabling and disabling. Check in the following chapters how to apply corrections. Applying a correction, the correct values appear in the reading in real time and under the original ones (Raw). The button to the right of Correction applies or disables the correction set.

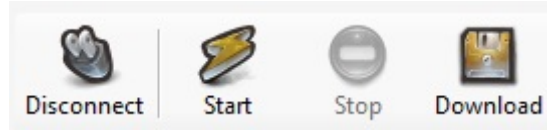
### Data logger start

Click on *Start* to open settings:



- Mission start date & time:** set here date&time you want the logger to start recording. Logger is synchronized with PC.
- Acquisition step:** set here acquisition step (every when logger must record a data)
- Mission length:** set here mission duration. Logger will stop recording after this time, unless memory is already full or logger is not stopped manually with the software
- Temperature Start:** enabling this option you will have the possibility to set a temperature which will start acquisition once it is reached
- Manual Start:** enabling this option logger will wait one minute before starting recording; if you apply a special clip it will be put in a standby mode and will start acquiring after you remove the clip (putting the clip back wont' stop acquisitions). This option is available for PressureDisk and Pirani Vacuum Logger only.

After starting the logger remember to click on *Disconnect* before removing it from the interface.

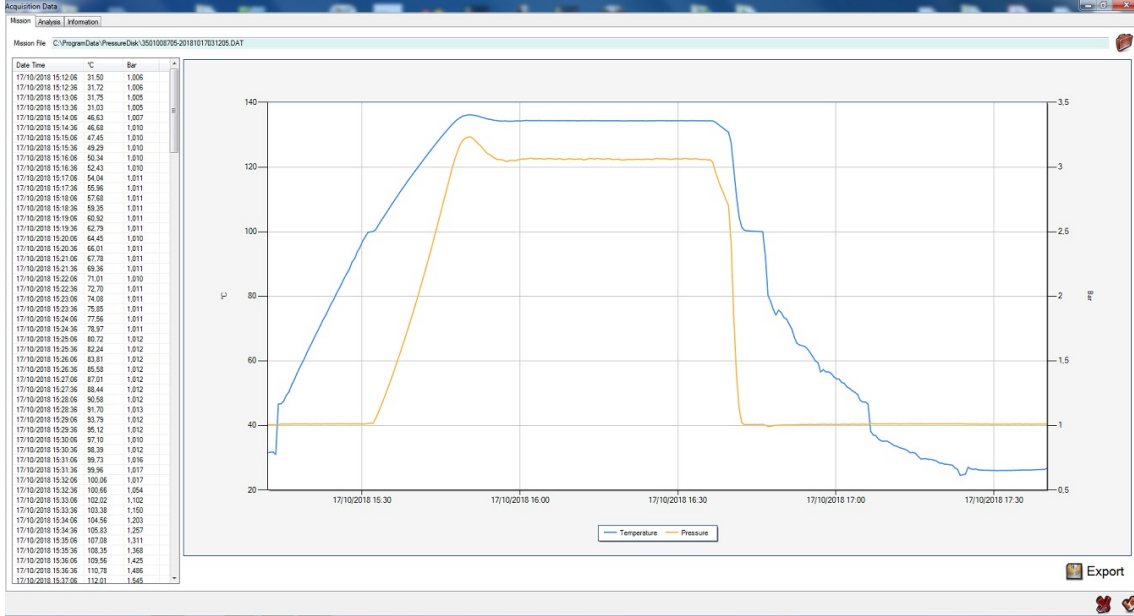


### Data download

To download data place the logger on the connection bay and click on *Connect*.

To stop the logger click on *Stop*.

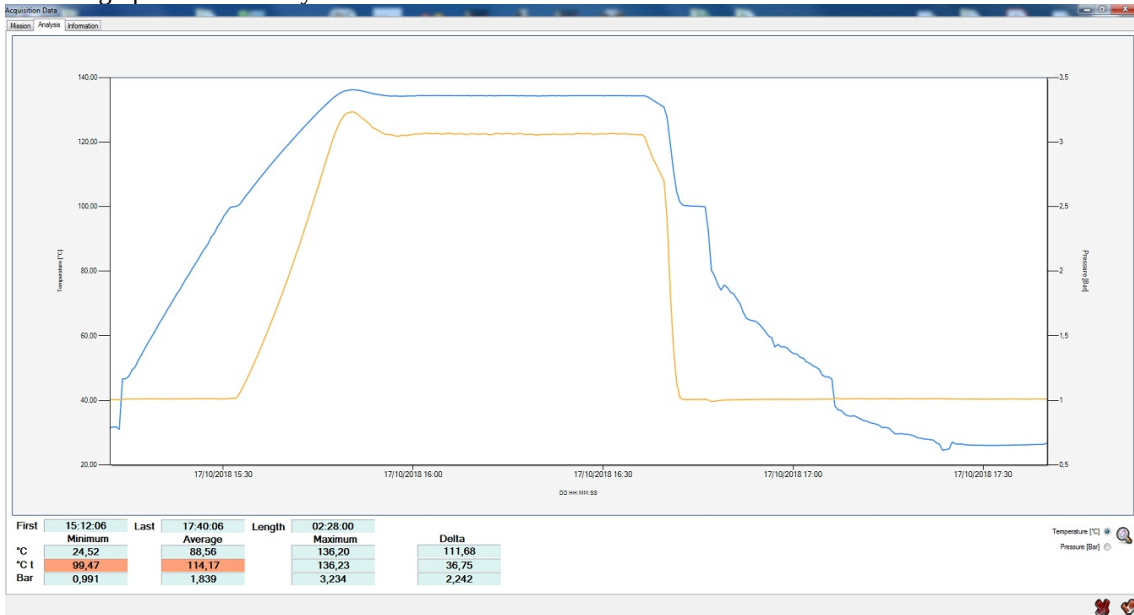
Click on *Download* to open following window.



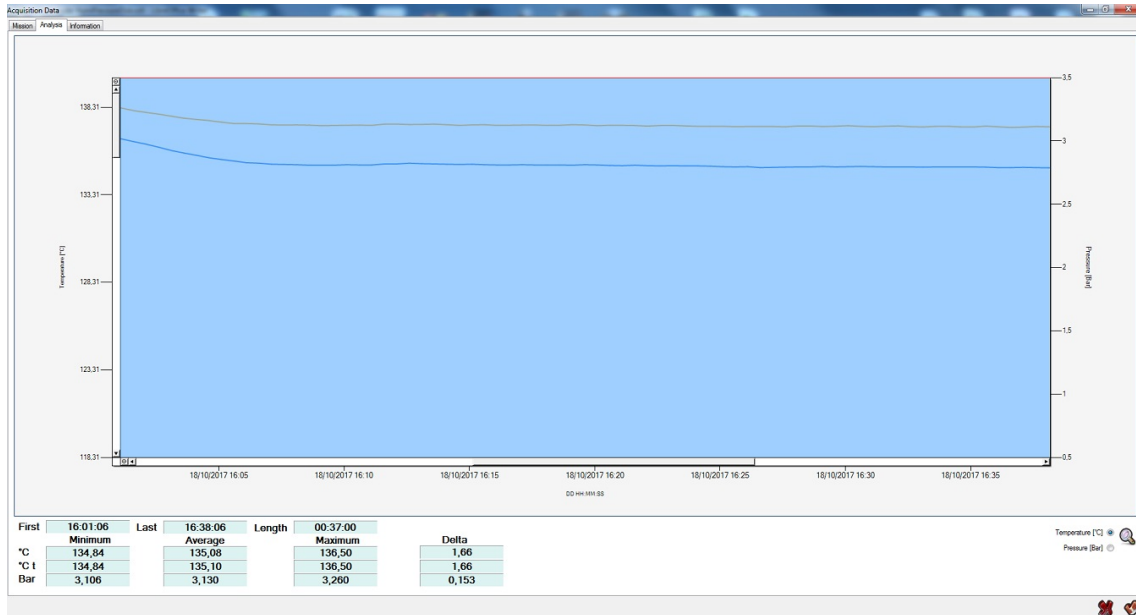
In the *Mission* tab graph and legend are shown along with the data table; you can export data into excel by clicking on *Export*, selecting name and path for the file.

On top the path of the saved file is shown.

In the *Analysis* tab the graph is shown only.



You can zoom by pressing the left mouse button, drag the mouse and highlight an area to be zoomed and then click on the looking glass in the bottom right corner.



Under the graph some statistics are shown.

	First	Last	Length	Minimum	Average	Maximum	Delta
°C	16:01:06	16:38:06	00:37:00	134,84	135,08	136,50	1,66
°C t	134,84	135,10	136,50	1,66			
Bar	3,106	3,130	3,260	0,153			

**First:** time of the first shown data

**Last:** time of the last shown data

**Length:** duration of the shown data

**Minimum:** max value shown

**Average:** average of the shown data

**Maximum:** min value shown

**Delta:** difference between max and min values shown

°C t	134,84	135,10	136,50	1,66
------	--------	--------	--------	------

°C t: here it is shown the theoretical temperature calculated from pressure in saturated steam. It is shown for PressureDisk only.

In the *Information* tab some information about the mission are shown:

Mission		Analysis		Information	
RHTemp					
Serial number	1701028838				
Calibrated on	13/09/2019				
Started	05/05/2020				
Step	0-0:0.1				
Length	0-23:59.59				
Acquisitions	11				

**Serial number:** data logger serial number

**Calibrated on:** data logger calibration date (calibration is suggested annually)

**Started:** starting date&time of last mission

**Step:** acquisition step set last time

**Length:** running time of last mission recorded

**Acquisitions:** number of acquisitions



## Data download - RHTemp

When downloading data from RHTemp you will find the same icons for *Adjustment* we've seen when you connect the same device.



## RHTemp Correction

Click on the *Adjustment* button when a RHTemp is connected or its data downloaded. Following window will open.

The 'Adjustment' window is used for managing correction data. It features a list of saved corrections on the left, a table for adding new corrections, and a section for defining ranges. The table below shows a single correction entry.

#	Date & Time	Value	Reference	Correction
1	23/04/2020 18:34:19	40,0	30,0	-10,0

On the left the list of saved correction is shown. By selecting one and clicking on *Export* button below a file will be saved that can be imported on another PC. In fact, corrections are saved locally and not in the logger so if you are using multiple PCs you have to export and import the necessary corrections between them. To import a correction click on the *Import* button.

You can save more than one correction per day and per logger, identified by its serial number.

To add a correction click on the *Add* button on the bottom left corner. Click on *Add* on the top right corner, near the *Channel* drop down list and elect the *Channel* you wish to add a correction for: you can add as many channels as you want. One Temperature and one Humidity channel are already present in the drop down list. Typically you will add one Temperature Channel and one or more Humidity channels, referred to different temperatures.

Once the requested channel is selected from the drop down list click on *Add* button below the top right list.

Input the correction values in the new window.

Point

°C

Value	Reference	Correction
50	49	-1,00

Cancel OK

Point

%RH

Value	Reference	Correction
80	78	-2,0

Cancel OK

Add as many points you want to each channel. To edit a point double click on it.

In the lower list, *Ranges*, you can add a temperature range where the above corrections are valid. For example, if you add different points on the humidity channel, these points might be valid in a specific temperature range. So select the humidity channel you want to add a range to and then click on the lower *Add* button. You now can type in the range of validity of the above corrections.

Range

°C

Minimum	Maximum
80	85

Cancel OK

So, you can create a full set of corrections:

- several points for temperature correction
- several pints for humidity correction on several different temperatures.

For example, you can add 20°C, 50°C, 80°C temperature points correction and then 40%, 70%, 80% humidity correction on two different ranges, at 25°C and at 80°C.

## Language change

To change the language open the configuration window (in the Main Window click on the gear on top right corner) and select the desired language from the drop down menu. Click *OK* and *OK* and restart the program to apply changes.



Tecnosoft s.r.l.  
 Via Galvani, 4, 20068 Peschiera Borromeo (MI) - ITALY  
 telephone +39 02 26922888 - fax +39 02 26922875 - [tecnosoft@tecnosoft.eu](mailto:tecnosoft@tecnosoft.eu) - [tecnosoft.eu](http://tecnosoft.eu)