



Reliable, Safe, Convenient

Shaking Heating Bath

- › Obtained DIN 12876 Standard-based performance.
- › Various functions for safe experimentation.
- › User-friendly design for convenient use.



About Us



Shaking Heating Bath

When do you use the Shaking Heating Bath?

The Shaking Heating Bath supports a wide range of bio sciences and QA/QC application areas ranging from reagents that can cause transformations at high heat to tissue culture and genetic sequencing. It is effective for dissolving samples affected by high temperatures, because samples can also be dissolved effectively at lower temperatures by heating as they're being mixed through shaking.

Each model's capacity: 17, 26, 37, 55L

Temperature range: Amb.+5 ~ 100°C

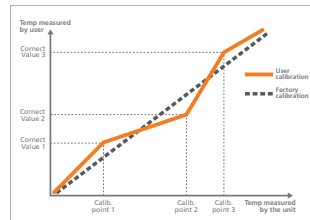
Speed range(RPM): 30 ~ 200rpm



BS2-10

Excellent Temperature and Shaking Control Performance

- Precise rpm control with superior accuracy.
- Excellent temperature variation due to the shaking motion ($50^{\circ}\text{C} \pm 0.1^{\circ}\text{C}$).
- Better performance with 3-points temperature calibration and 1-point shaking calibration.
- Stable shaking ability minimizes vibration under high loads.
- PID control optimal for the bath.
- Bath structure with a smooth and circulatory flow of water.



	Uncalibrated	Calibrated
Calibration 1	30.0 °C	31.2 °C
Calibration 2	40.0 °C	39.6 °C
Calibration 3	50.0 °C	49.0 °C

Calibration which maintains constant performance

A Quick-responding Safety Device

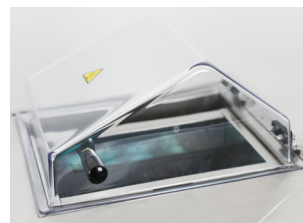
- Real-time temperature and rpm control through mobile monitoring system(option)
- Audio and visual alarms ring when there is not enough water to prevent overheating.
- Top-rated overheating protection system. (registration No. 10-0397583)
- Alarm when temperature and speed deviation occur or abnormal condition of temperature sensor.
- Prevents over-current by short circuit breaking device.



Provision of remote equipment monitoring service

Easy and Intuitive Operation

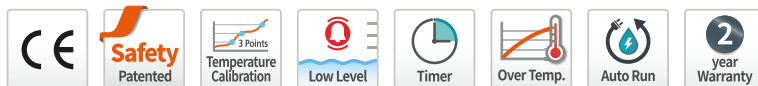
- Minimizes evaporation by using the mounted gable cover when operating at high temperatures and prevents condensed water from falling onto specimen.
- Scheduling optimization through an automatic on/off timer (up to a maximum of 999 hours and 59 minutes).
- Easy operation and monitoring with a touch color display.
- Accepts larger sample volumes with a new hinged lid and extended height (maximum 2.8L of flasks).
- Drain port of high accessibility located on the side.
- Real-time monitoring and control of RPM even while in operation.



Transparent gable cover (standard)



Visual monitoring and control of RPM during operation



Specification

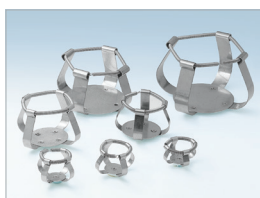
Model		BS2-10	BS2-15	BS2-20	BS2-30
Bath volume (L / cu ft)		17 / 0.6	26 / 0.9	37 / 1.3	55 / 1.9
Temperature	Working temp. range (°C / °F)	Amb. +5 to 100 / Amb. +9 to 212	Amb. +5 to 100 / Amb. +9 to 212	Amb. +5 to 100 / Amb. +9 to 212	Amb. +5 to 100 / Amb. +9 to 212
	Temp. stability at 50°C (±°C / °F)	0.1 / 0.18	0.1 / 0.18	0.1 / 0.18	0.1 / 0.18
Shaking system	Motion type	Reciprocal	Reciprocal	Reciprocal	Reciprocal
	Frequency (rpm)	30 to 200	30 to 200	30 to 200	30 to 200
	Stroke length (mm / inch)	25 / 0.98	25 / 0.98	30 / 1.18	30 / 1.18
Dimension	Bath opening, depth (W x L, D, mm / inch)	143 x 269, 192 / 5.6 x 10.6, 7.6	263 x 269, 192 / 10.4 x 10.6, 7.6	415 x 269, 192 / 16.3 x 10.6, 7.6	565 x 319, 192 / 22.2 x 12.6, 7.6
	Exterior (W x D x H, mm / inch)	474 x 417 x 426 / 18.7 x 16.4 x 16.8	594 x 417 x 426 / 23.5 x 16.4 x 16.8	746 x 417 x 426 / 29.4 x 16.4 x 16.8	882 x 467 x 426 / 34.7 x 18.4 x 16.8
	Net weight (kg / lbs)	23 / 51	27 / 60	31 / 68	38 / 84
Electrical requirements (230V, 60Hz, A)		3.7	4.6	8.9	8.9
Cat. No.		AAH44105K	AAH44155K	AAH44205K	AAH44305K
Electrical requirements (120V, 60Hz, A)		7.1	8.8	-	-
Cat. No.		AAH44103U	AAH44153U	-	-

- ※ The lowest controllable temperature depends on variations in room and sample temperatures. Please contact technical support for consultation before purchasing.
- ※ Technical data (according to DIN 12876)
- ※ Bath fluid : Water

Accessories

Flask Clamp

- Clamp being able to hold an erlenmeyer flask.
- Excellent durability as made of stainless steel.
- Equipped with flask clamps of the desired size/quantity on the universal platform and used inside the bath.



Cat. No.	Flask Clamp	Max. Mountable Flask Clamps			
		BS2-10	BS2-15	BS2-20	BS2-30
AAA23550	50 ml	9	12	20	32
AAA23551	100 ml	3	9	15	24
AAA23552	250 ml	2	4	8	12
AAA23556	300 ml	2	4	8	12
AAA23553	500 ml	2	4	6	12
AAA23554	1 L	1	2	4	6
AAA23555	2 L ¹⁾	-	1	2	3
AAA23557	2.8 L ¹⁾	-	1	1	2

1) 2 L and 2.8 L flasks can be used with the bath cover opened.

Universal Platform

- Accessories for mounting flask clamp inside the bath.
- Can be used instead of the spring part in the spring wire rack.



Cat. No.	Model
AAA44521	BS2-10
AAA44522	BS2-15
AAA44523	BS2-20
AAA44524	BS2-30

Dedicated Platform

- Set of 250 ml/500 ml flask clamps mounted on Universal Platform.
- Can be used instead of the spring part in the spring wire rack.



Cat. No.	Flask Clamps	Model
AAA44531	250 ml x 2ea	BS2-10
AAA44532	500 ml x 2ea	
AAA44541	250 ml x 4ea	BS2-15
AAA44542	500 ml x 4ea	
AAA44551	250 ml x 8ea	BS2-20
AAA44552	500 ml x 6ea	
AAA44561	250 ml x 12ea	BS2-30
AAA44562	500 ml x 12ea	

Test Tube Rack

- Fix test tubes of various sizes.
- Excellent durability as made of stainless steel.
- Structure allows tilt adjustment.
- Can be used instead of the spring part in the spring wire rack.



Cat. No.	Description	Max. Quantity of Racks
AAA44581	ø8 mm x 86 Tubes	BS2-10 : 1ea BS2-15 : 2ea BS2-20 : 3ea BS2-30 : 4ea
AAA44582	ø10 mm x 86 Tubes	
AAA44583	ø12 mm x 58 Tubes	
AAA44585	ø16 mm x 32 Tubes	
AAA44586	ø25 mm x 19 Tubes	

Stainless Steel Cover

- Sturdy, corrosion-resistant, stainless steel material.

Cat. No.	Model
AAA44600	BS2-10
AAA44601	BS2-15
AAA44602	BS2-20
AAA44603	BS2-30

LC GreenBox

- Real-time monitoring the state of a device via mobile app under an internet connection.
- Available to connect 4 devices in max. for 1 unit of LC GreenBox.

Cat. No.	Dimension (W x D x H, mm / inch)
AAHQ1011K	156 x 94 x 34 / 6.14 x 3.7 x 1.34



Lab Companion Heating Bath & Bath Circulator



Refrigerated & Heating Bath Circulator, Program

- 10 Programs & 10 Steps.
- Intuitive operation with color touch display.



Refrigerated & Heating Bath Circulator, General

- Clear VDF & simple operation.
- Applies smart refrigeration system.



Heating Bath Circulator, Program/General

- 10 Programs & 10 Steps (Program type)
- Detection and notification of temperature deviation.



Heating Bath, General

- 3-point temperature calibration and timer function.
- Alert notification of low solution.



Heating Bath, Agitator

- Improved temp. uniformity by agitation.
- Stirring speed adjustable via scale knob



Heating Bath, Economy

- Simple scale temperature control.
- Automatic power cut-off system against overheating.



Heating Bath, Visible

- Intuitive viewing window for convenient internal observation.
- Suitable for viscosity measurement.



Heating Bath, Shaking

- Provides reliable reciprocating motion.
- Convenient structure for sample handling.

Lab Companion Korea

Head office & factory

Add. 153, Techno 2-ro, Yuseong-gu, Daejeon, 34025, South Korea

International sales office

Add. 10F-1005, 219, Gasandigital 1-ro, Geumcheon-gu, Seoul, 08501, South Korea

Tel. +82 2 2627 3816

Fax +82 2 3143 1824

E-mail overseas@jeiotech.com

Lab Companion U.S.A. - Jeio Tech, Inc.

Add. 19 Alexander Road, Ste. 7, Billerica, MA 01821-5094, U.S.A.

Tel. +1 781 376 0700 Fax +1 781 376 0704

E-mail info@jeiotech.com

Your best business partner

